

A7S Recording Monitor

Touch Screen | 1500Nits | Uncompressed



- Support ProRes recording format
- Support upto 4K 60p 12Bit signal
- Support 12G SDI & HDMI 2.0 input/output

Powerful Recording & Playback Function

Recording: Capture stunning 4K60p 12Bit HDR video directly from the camera. The recording format is an easy-to-edit ProRes format, conveniently stored on an affordable standard SSD drive. Enjoy versatile functionalities, including recording, playback, monitoring, editing, Pre-roll record, time-lapse photography, fast & slow action, Pull-down record, EXFAT file system, and customizable recording file names.

Playback: Support full list review or custom playlist review. Enable frame-by-frame, fast play, slow play, loop play, and other operations. During shooting or playback, the system supports marking fragments at specific times, with the ability to output to disk in XML format for direct use in later stages.



Super Brightness, Accurate Color Reproduction

Equipped with a 1500 brightness LCD screen, the monitor can be clearly viewed even outdoors. Compatible with ColourSpace and Calman calibration software, Konvision monitors apply K10-A probe (professional level) to achieve a precise color.



7" Size

IPS

IPS Screen



Contrast Ratio
1200: 1



Brightness
1500Nits

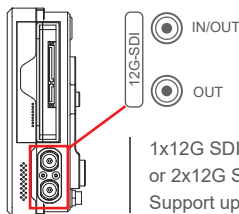


Color Depth
10Bit

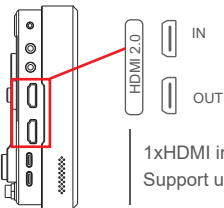


Viewing Angle
160°

Professional Interface



1x12G SDI in/out
or 2x12G SDI out
Support upto 4K 60p 10Bit signal



1xHDMI in and 1xHDMI out
Support upto 4K 60p 12Bit signal

Professional Functions

Built-in waveform, false color, focus assist etc functions. Support 3rd party LUT files import



· 3D LUT files import

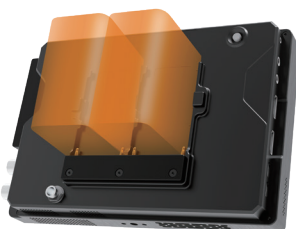


Gamma selection	Gamma 2.0, 2.2, 2.4, 2.6
HLG selection	HLG 1.0, 1.1, 1.2, 1.3, 1.4, 1.5
EOTF	Slog3(SDR), Slog2(SDR), Slog3(SDR), Slog3(HDR)

· EOTF Curves Conversions, gamma selection

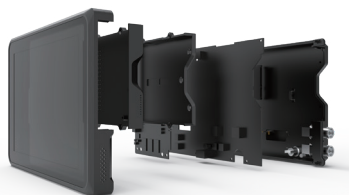
Dual Battery Slot

Dual NP-F battery slot, support hot swap, recording, monitoring without interruption



Aluminum Alloy Casing

The aluminum alloy casing ensures that it is strong and durable in different environments.



· Focus Assist



· HDR Waveform/
HDR Area Display



· False Color



· Zebra



A7S 7" Recording Monitor

Konvision

LCD Panel	
Size	7"
Resolution	1920×1200
Aspect Ratio	16:10
Pixel Pitch	78.75×78.75(um)
Contrast Ratio	1200:1
Viewing Angle	160°(H) / 160°(V)
Color Depth	1.07B
Brightness	1500cd/m ²
Response Time	30ms
Screen	IPS panel
Screen flip/mirror	Vertical Flip, horizontal flip
Input & Output	
1×BNC(IN/OUT)	12G/6G/3G/HD-SDI (SDI IN: Recording / Monitoring mode. SDI OUT: Playback mode)
1×BNC(OUT)	12G/6G/3G/HD-SDI
1×HDMI2.0(IN)	HDMI 2.0
1×HDMI2.0(OUT)	HDMI 2.0
1×Type-C(IN)	Support DP1.4 signal input or system program, LUT update
1×2.5mm(OUT)	LANC output control strip
Record Format	
ProRes	LT, 422, 422HQ, Pr
Video Resolution & Frame Rate (Recording, Monitoring&Playback)	
4K DCI 4096 x 2160	23.98/24/25/29.97/30/50/59.94/60p
4K UHD 3840 x 2160	23.98/24/25/29.97/30/50/59.94/60p
2K DCI 2048 x 1080	23.98/24/25/29.97/30/50/59.94/60p
FHD 1920 x 1080 Progressive	23.98/24/25/29.97/30/50/59.94/60p
FHD 1920 x 1080 PsF	Convert to P and loop out PsF
FHD 1920 x 1080 Interlaced	50/59.94/60i
1280 x 720p	50/59.94/60p
Storage	
SATA Slot	Standard 2.5inch SSD SATA3.0 hard drive
Real-time processing	
Pull-down conversion	24/25/30pSF>24/25/30p (2:2 pull-down)
4K to HD conversion	Support loop-out & playback
Audio In & Out	
HDMI	8 Channels HDMI embedded audio
SDI	8 Channels SDI embedded audio
Channels	Audio level meter horizontal display 2 channels, and optional 2 channels audio out
Audio Headset	Output 3.5mm headset jack
Built-in Speaker	1.5W x 1

Function	
Recording/Playback/ Monitoring/Editing/HDR	Support
Look up table (LUT) support	3D LUT(.3dl format), Support 3rd party LUT files import
Playlist	Support full list review or custom playlist review
Playback operation	Support frame-by-frame, fast play, slow play, loop play etc
Marker	Support marking fragments from time to time, and output to disk in XML format, which can be used directly in the later period
Pre-roll Record	Support Pre-roll Record(HD, 10s, 4K 2s)
Time-lapse photography	Support
Fast & slow action	Support
Pull-down record	Support
ExFAT file system	Support ExFAT file system, customize the recording file name
ColorSpace	Rec 709, EBU, DCI P3 D65, DCI P3, Rec2020, User1, User2
EOTF	Gamma 2.0/2.2/2.4/2.6, Rec.2100 HLG 1.03/1.11/1.16/1.20/1.27/1.33, ST2084 PQ, ST2084 PQ (softroll) , SLog, SLog2, Slog3, Clog, Clog2, Clog3, Vlog, Dlog, LogC
Picture analysis	Waveform Luma \ RGB \100%Vector \ 75%Vector, Auxiliary Focus Assist\ Zebra \ False Color \ Blue Exposure\ Zoom1 \Zoom2\ Frame Guide\ Save Areas \ Anamorphic \ Freeze
Tally light	LED Tally Light and On-screen Tally display
Dimension	
Main body weight	825g
Main body dimension	194x129x48.5mm(WxHxDmm)
Material	Aluminum alloy casing
Install screw	1/4" -20 screw hole, 1xtp, 1xbottom
General	
Power Consumption	25-36W
Input Voltage	DC IN 6.2V-8.4V
Compatible Battery	NP-F series battery (Support dual batteries)
Battery	Supports dual batteries
Battery life(based on 2x7.4)	Maximum brightness 6600mAh-3hrs 7800mAh -4.5hrs
Continuous power supply	Support hot swap, battery replacement without shutdown
Packing list	
Including	main body, power adaptor, user manual
Optional accessory	magic arm

※Specifications may be changed without prior notice.

Shenzhen Konvision Technology Co., Ltd

5th Floor, Building No.1, Honghui Industrial Park, Liuxian 2nd Road, Baoan District, Shenzhen, 518101, Guangdong, China

(0755) 8292 4800

(0755) 8271 6495

www.konvision.com

sales@konvision.com



LinkedIn



Facebook