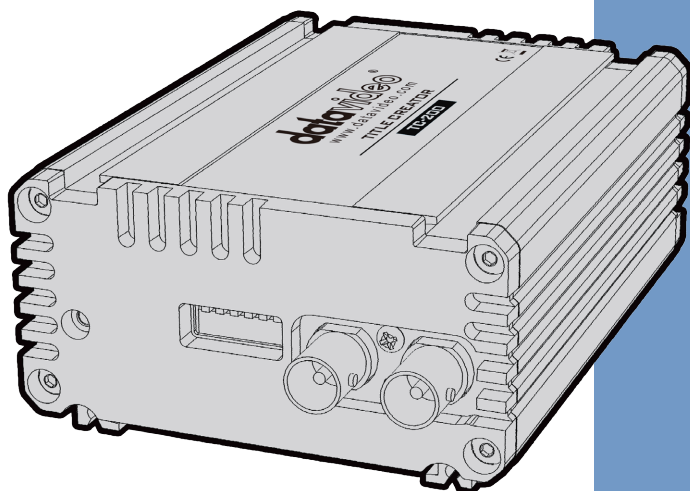


datavideo



TITLE CREATOR

TC-200

Instruction manual

www.datavideo.com

Table of Contents

FCC COMPLIANCE STATEMENT	3
WARNINGS AND PRECAUTIONS.....	3
WARRANTY	5
STANDARD WARRANTY	5
THREE YEAR WARRANTY	5
DISPOSAL	6
INTRODUCTION	7
FEATURES.....	7
HOW TO DOWNLOAD THE CG-200 CG SOFTWARE	7
MINIMUM COMPUTER REQUIREMENTS:	7
COMPATIBILITY OF VGA GRAPHICS CARD ON LAPTOP.....	7
EXAMPLE SET UP WITH TC-200	8
CONNECTIONS & CONTROLS.....	9
FRONT PANEL.....	9
REAR PANEL.....	10
DIP SWITCH CONTROL	11
FIRMWARE UPDATE	12
SPECIFICATIONS.....	16
SERVICE & SUPPORT	17

Disclaimer of Product & Services

The information offered in this instruction manual is intended as a guide only. At all times, Datavideo Technologies will try to give correct, complete and suitable information. However, Datavideo Technologies cannot exclude that some information in this manual, from time to time, may not be correct or may be incomplete. This manual may contain typing errors, omissions or incorrect information. Datavideo Technologies always recommend that you double check the information in this document for accuracy before making any purchase decision or using the product. Datavideo Technologies is not responsible for any omissions or errors, or for any subsequent loss or damage caused by using the information contained within this manual. Further advice on the content of this manual or on the product can be obtained by contacting your local Datavideo Office or dealer.

FCC Compliance Statement

This device complies with part 15 of the FCC rules. Operation is subject to the following two conditions:

- (1) This device may not cause harmful interference, and
- (2) This device must accept any interference received, including interference that may cause undesired operation.

Warnings and Precautions

1. Read all of these warnings and save them for later reference.
2. Follow all warnings and instructions marked on this unit.
3. Unplug this unit from the wall outlet before cleaning. Do not use liquid or aerosol cleaners. Use a damp cloth for cleaning.
4. Do not use this unit in or near water.
5. Do not place this unit on an unstable cart, stand, or table. The unit may fall, causing serious damage.
6. Slots and openings on the cabinet top, back, and bottom are provided for ventilation. To ensure safe and reliable operation of this unit, and to protect it from overheating, do not block or cover these openings. Do not place this unit on a bed, sofa, rug, or similar surface, as the ventilation openings on the bottom of the cabinet will be blocked. This unit should never be placed near or over a heat register or radiator. This unit should not be placed in a built-in installation unless proper ventilation is provided.
7. This product should only be operated from the type of power source indicated on the marking label of the AC adapter. If you are not sure of the type of power available, consult your Datavideo dealer or your local power company.
8. Do not allow anything to rest on the power cord. Do not locate this unit where the power cord will be walked on, rolled over, or otherwise stressed.
9. If an extension cord must be used with this unit, make sure that the total of the ampere ratings on the products plugged into the extension cord do not exceed the extension cord rating.
10. Make sure that the total amperes of all the units that are plugged into a single wall outlet do not exceed 15 amperes.
11. Never push objects of any kind into this unit through the cabinet ventilation slots, as they may touch dangerous voltage points or short



out parts that could result in risk of fire or electric shock. Never spill liquid of any kind onto or into this unit.

12. Except as specifically explained elsewhere in this manual, do not attempt to service this product yourself. Opening or removing covers that are marked “Do Not Remove” may expose you to dangerous voltage points or other risks, and will void your warranty. Refer all service issues to qualified service personnel.
13. Unplug this product from the wall outlet and refer to qualified service personnel under the following conditions:
 - a. When the power cord is damaged or frayed;
 - b. When liquid has spilled into the unit;
 - c. When the product has been exposed to rain or water;
 - d. When the product does not operate normally under normal operating conditions. Adjust only those controls that are covered by the operating instructions in this manual; improper adjustment of other controls may result in damage to the unit and may often require extensive work by a qualified technician to restore the unit to normal operation;
 - e. When the product has been dropped or the cabinet has been damaged;
 - f. When the product exhibits a distinct change in performance, indicating a need for service.

Warranty

Standard Warranty

- Datavideo equipment are guaranteed against any manufacturing defects for one year from the date of purchase.
- The original purchase invoice or other documentary evidence should be supplied at the time of any request for repair under warranty.
- The product warranty period begins on the purchase date. If the purchase date is unknown, the product warranty period begins on the thirtieth day after shipment from a Datavideo office.
- All non-Datavideo manufactured products (product without Datavideo logo) have only one year warranty from the date of purchase.
- Damage caused by accident, misuse, unauthorized repairs, sand, grit or water is not covered under warranty.
- Viruses and malware infections on the computer systems are not covered under warranty.
- Any errors that are caused by unauthorized third-party software installations, which are not required by our computer systems, are not covered under warranty.
- All mail or transportation costs including insurance are at the expense of the owner.
- All other claims of any nature are not covered.
- All accessories including headphones, cables, and batteries are not covered under warranty.
- Warranty only valid in the country or region of purchase.
- Your statutory rights are not affected.

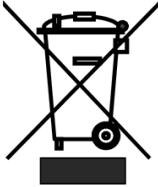
Three Year Warranty

- All Datavideo products purchased after July 1st, 2017 are qualified for a free two years extension to the standard warranty, providing the product is registered with Datavideo within 30 days of purchase.
- Certain parts with limited lifetime expectancy such as LCD panels, DVD drives, Hard Drive, Solid State Drive, SD Card, USB Thumb Drive, Lighting, Camera module, PCIe Card are covered for 1 year.



- The three-year warranty must be registered on Datavideo's official website or with your local Datavideo office or one of its authorized distributors within 30 days of purchase.

Disposal



For EU Customers only - WEEE Marking

This symbol on the product or on its packaging indicates that this product must not be disposed of with your other household waste. Instead, it is your responsibility to dispose of your waste equipment by handing it over to a designated collection point for the recycling of waste electrical and electronic equipment. The separate collection and recycling of your waste equipment at the time of disposal will help to conserve natural resources and ensure that it is recycled in a manner that protects human health and the environment. For more information about where you can drop off your waste equipment for recycling, please contact your local city office, your household waste disposal service or the shop where you purchased the product.



CE Marking is the symbol as shown on the left of this page. The letters "CE" are the abbreviation of French phrase "Conformité Européene" which literally means "European Conformity". The term initially used was "EC Mark" and it was officially replaced by "CE Marking" in the Directive 93/68/EEC in 1993. "CE Marking" is now used in all EU official documents.

Introduction

Thank you for purchasing the Datavideo TC-200, Title Creator, overlay box. The TC-200 can be used with Datavideo's Windows based Character Generator software such as CG-200, CG-250, CG-350 and CG-500.

The TC-200 is designed to be portable and rugged as well as quick and easy to set up in the field. It allows producers to create professional CG overlays with a Windows laptop instead of transporting a high end desktop PC with PCIe cards fitted.

This manual covers the TC-200 overlay box only, a separate manual is provided with the supplied Character Generator software.

Features

- HDMI input for laptop CG overlay input*.
- HD-SDI video input for overlay or optional genlock
- Two HD-SDI outputs can be configured as separate Key & Fill outputs or as CG overlay with video
- Supports video resolutions up to 1080i including PAL & NTSC
- Unit can be powered from Battery DC voltage when using an accessory battery mounting plate [7 to 15 V DC Input].
- Easy to follow DIP switch configuration

*An optional DVI to HDMI cable or Display Port adaptor to HDMI cable may be required depending on the laptop being used.

How to download the CG-200 CG Software

To download the latest CG-200 software, visit Datavideo official website <http://www.datavideo.com/product/CG-200>.

Minimum computer requirements:

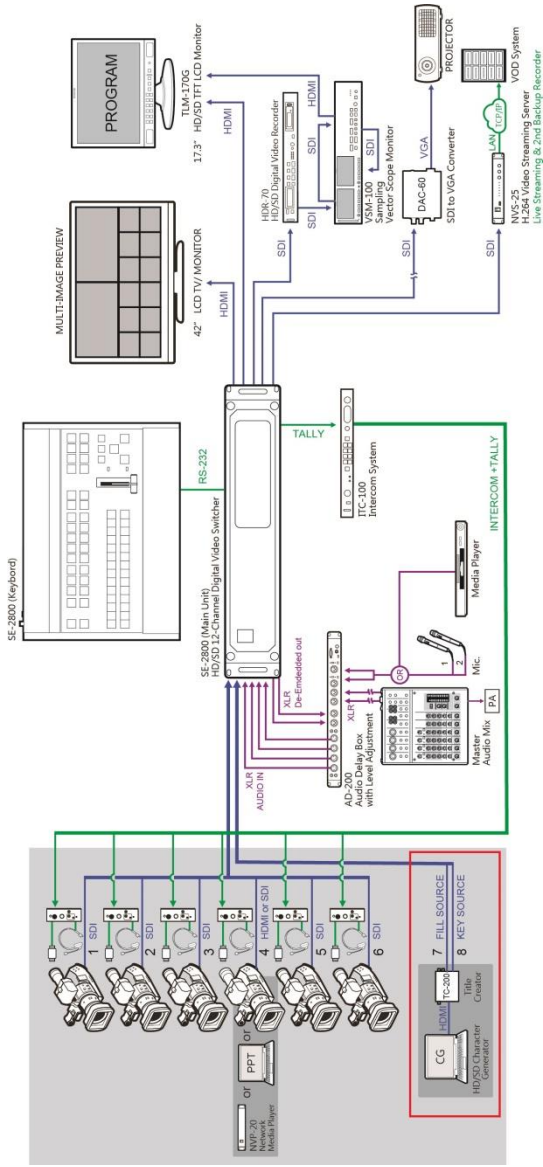
Please refer to separate CG software manual.

Compatibility of VGA graphics card on Laptop

Compatible with ATI and Intel VGA graphics cards

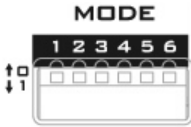
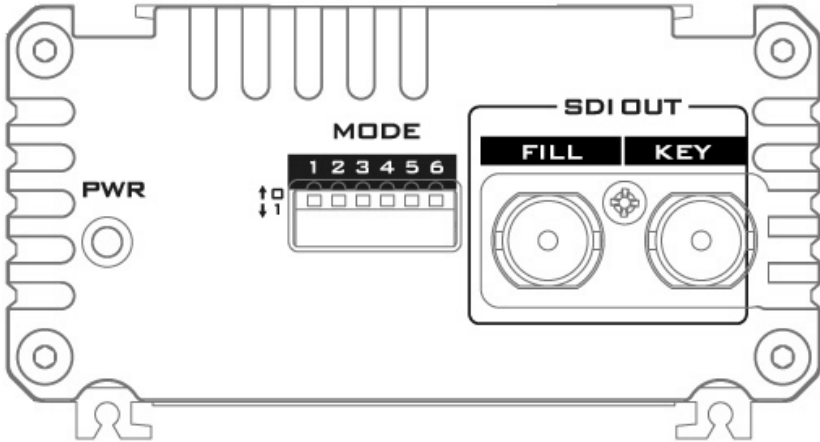
Color difference may occur when used with NVIDIA graphics cards.

Example Set Up with TC-200



Connections & Controls

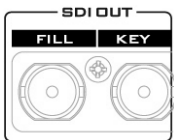
Front Panel



Mode Select

The DIP switch allows the user to configure the following TC-200 settings.

datavideo®		MODE		TC-200					
		1	2	3	4	5	6		
DEVICE MODE				CONVERSION MODE		CONTROL FROM			
000	1080i 50Hz	100	720p 60Hz	00	HDMI-TITLES A-CHANNEL	0	DIPSWITCH		
001	1080i 60Hz	101	720p 59.94Hz	01	HDMI TITLES OVERLAYS DI IN	1	PC		
010	1080i 59.94Hz	110	576i 50Hz	10	HDMI-TITLES A-CHANNEL SDI IN=GENLOCK				
011	720p 50Hz	111	480i 59.94Hz	11	NOT IN USE				



SDI Output

Fill & Key channel outputs

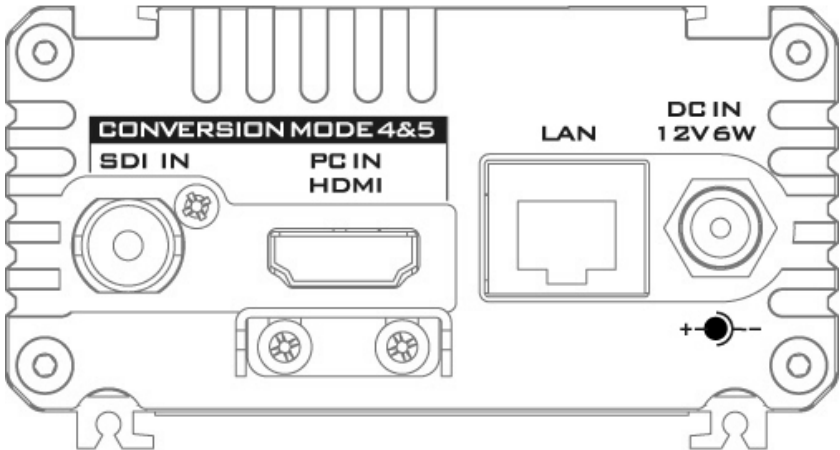
PWR



Power LED

Turned ON when power is connected.

Rear Panel



SDI IN



HD/SD - SDI Input

The **SDI IN** connects an SDI video source via an SDI cable.

Note: The TC-200 does not support external tri-level sync and black burst genlock signals. It however uses the sync of the SDI input source.

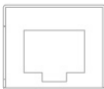
**PC IN
HDMI**



PC Input (HDMI)

Connect a video input from the PC via an HDMI cable.

LAN



Ethernet Port (RJ-45)

10/100M Ethernet Network Interface for FW upgrade

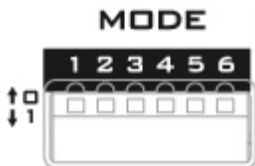


DC In Socket

Connect the supplied 12V PSU to this socket. The connection can be secured by screwing the outer fastening ring of the DC In plug to the socket.

DIP Switch Control

The TC-200 provides 6 DIP switches for users to configure device, conversion and control modes. Please see the following table for details of the DIP switch control.



DIP Switch 1,2,3	Device Modes
0/0/0	1080i50Hz
0/0/1	1080i60Hz
0/1/0	1080i59.94Hz
0/1/1	720p50Hz
1/0/0	720p60Hz
1/0/1	720p59.94Hz
1/1/0	576i50Hz
1/1/1	480i59.94Hz
DIP Switch 4 & 5	Conversion Modes
0/0	Split HDMI signal into titles and alpha channel.
0/1	HDMI titles overlay over the input SDI signal.
1/0	Split HDMI signal into titles and alpha channel with Genlock.
1/1	Not in Use
DIP Switch 6	Control Modes
0	Configure TC-200 from RJ-45 input
1	Configure TC-200 by DIP Switches

Firmware Update

Datavideo usually releases new firmware containing new features or reported bug fixes from time to time. Customers can either download the TC-200 firmware as they wish or contact their local dealer or reseller for assistance.

This section outlines the firmware upgrade process which should take ***approximately 10 minutes to complete***.

The existing TC-200 settings should persist through the *firmware upgrade process, which should not be interrupted once started* as this could result in a non-responsive unit.

Successful firmware upgrade on TC-200 requires:

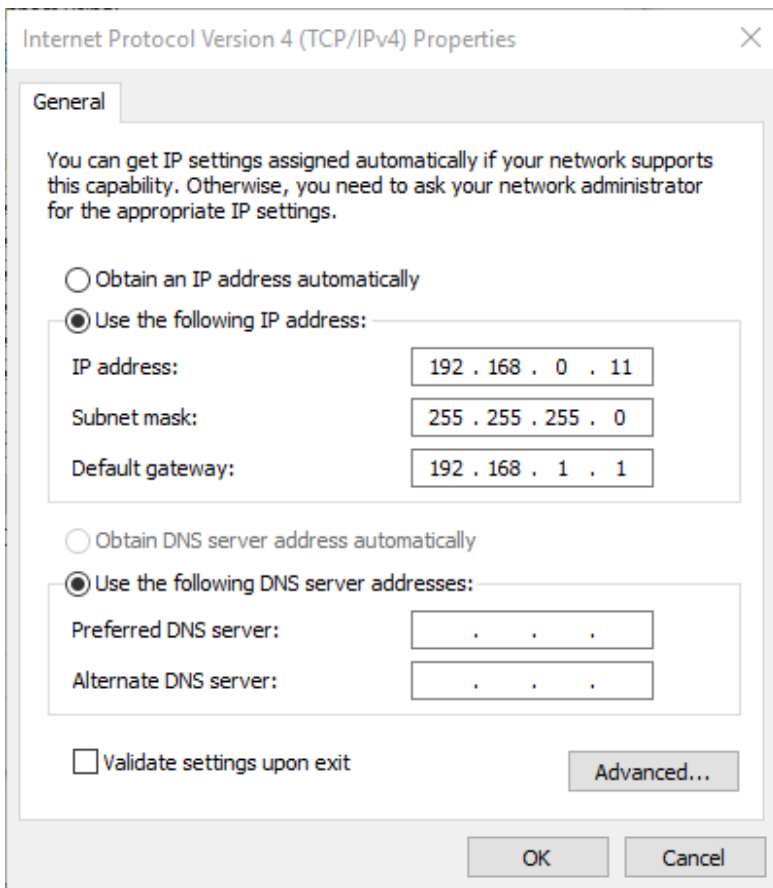
- TC-200 x 1
- 12V Power adapter x 1
- Windows PC x 1
- Ethernet Cable x 1
- Flash Update Software (the software can be downloaded from the official website)

Procedure

1. Connect the TC-200 to a Windows PC via the Ethernet interface.

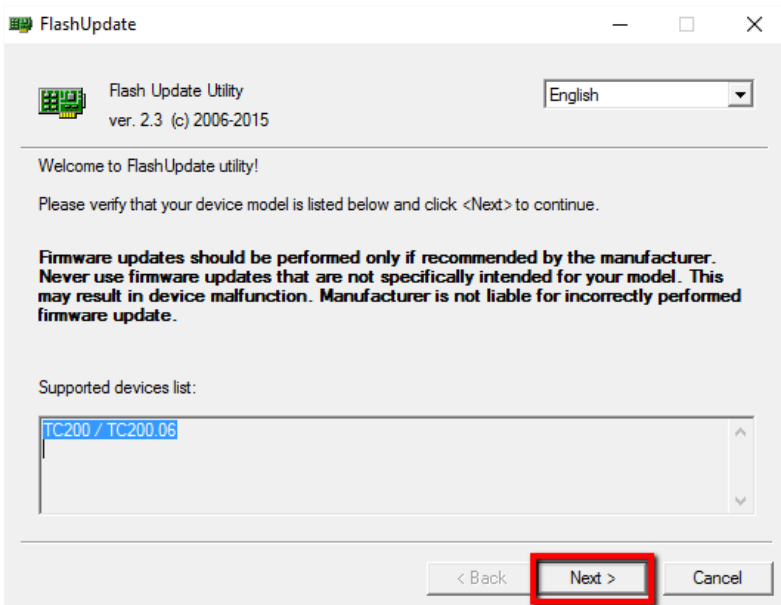
Note: TC-200 has a default IP address of 192.168.0.211.

2. Set the PC's IP address to ***192.168.0.11***.

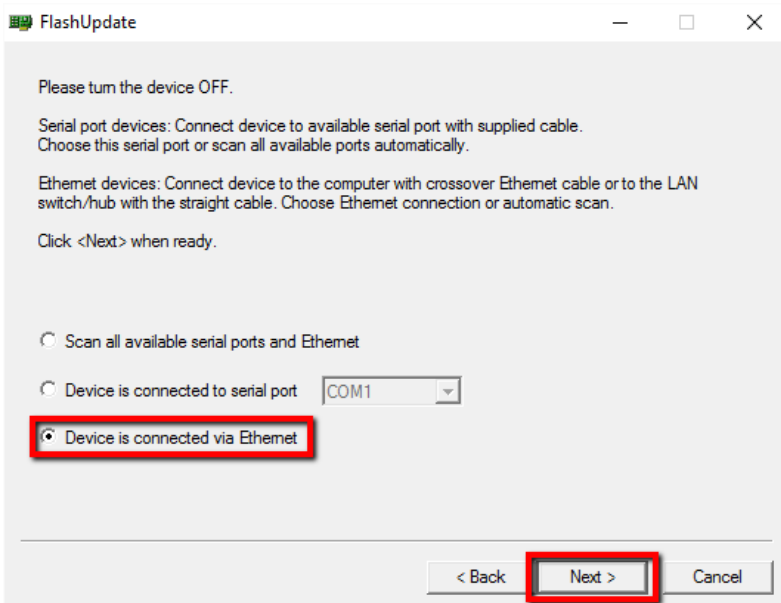


3. Before running the Flash Update software, please set the **TC-200 DIP SW 6** to 1 (DOWN).

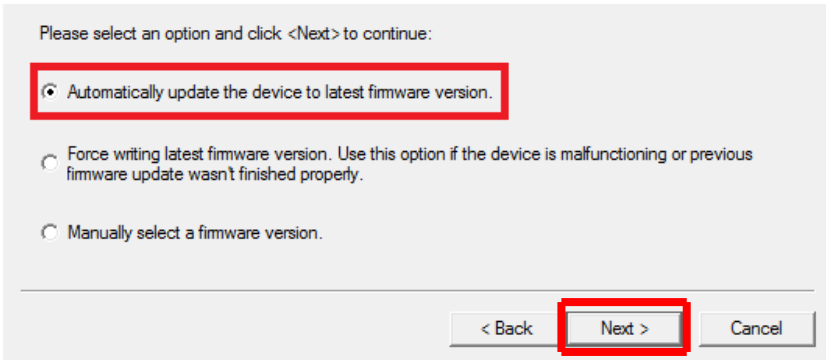
4. Run **FlashUpdate_x.xx.exe** and click "**Next**".



5. Select “*Device is connected via Ethernet*” and click “*Next*”.



6. **POWER ON** the **TC-200** and as soon as it is discovered by the Computer, select “**Automatically update the device to latest firmware version**” then click **NEXT**.



7. Click **Yes button** to confirm you wish to perform the firmware update when you see the prompt window “**Do you really want to perform firmware update?**”.

8. The update process will now begin, taking around 15 minutes to complete.

9. Once this process is complete, **close the application** and **power cycle the TC-200**.

Specifications

Text Source	Frame text
	Clock
	Text file
	CSV file
File Format	JPG, PNG, BMP, TGA, GIF
Animation Format	GIF
I / O	HDMI input x 1
	HD-SDI input x 1
	HD-SDI output x 1
	LAN port x 1
Mode	CG overlay: HDMI input is CG; SDI in is live video
	Gen-lock mode HDMI input is CG; SDI in is reference signal
	Reference with internal signal: HDMI input is CG; SDI in isn't in use
Input Format	1920 x 1080i/50Hz
	1920 x 1080i/60Hz
	1920 x 1080i/59Hz
	1920 x 1080i/60Hz (instead 1920 x 1080i/59Hz)
	1280 x 720p/50Hz
	1280 x 720p/60Hz
	1280 x 720p/59Hz
	1280 x 720p/60Hz (instead 1280 x 720p/59Hz)
	720 x 576i/50Hz
	1920 x 1080i/50Hz (crop to 720 x 576i/50Hz)
720 x 480i/59Hz	
1920 x 1080i/60Hz (crop to 720 x 480i/60Hz)	
Conversion Mode	HDMI signal is split into titles and alpha channel.
	HDMI signal is split into titles and alpha channel with Genlock.
	HDMI titles overlay over the input SDI signal.
Controlled	By dip switch
	By PC
Power Voltage	12V
F/W Upgrade	Ethernet

Service & Support

It is our goal to make your products ownership a satisfying experience. Our supporting staff is available to assist you in setting up and operating your system. Please refer to our web site www.datavideo.com for answers to common questions, support requests or contact your local office below.

China Shanghai
DataVideo Technologies China Co
601, Building 10 No. 1228,
Rd. Jiangchang,
Jingnan District, Shanghai
Tel: +86 21-5603 6599
Fax: +86 21-5603 6770
E-mail: service@datavideo.cn

China Beijing
DataVideo Technologies China Co
No. 812, Building B, Wankai Center,
No.316, Wan Feng Road, Fengtai District,
Beijing, China
Tel: +86 10-8596 9034
Fax: +86 10-8586 9074
E-mail: service@datavideo.cn

China Chengdu
DataVideo Technologies China Co
B-323, Meiliant square, No. 1385,
Middle of Tianfu Avenue, Gaosin District,
Chengdu, Sichuan
Tel: +86 28-8613 7786
Fax: +86 28-8513 6486
E-mail: service@datavideo.cn

China Fuzhou
DataVideo Technologies China Co
A1-2318-19 Room, No. 8, Aojiang Road,
Taijiang District, Fuzhou, Fujian, China
Tel: 0591-83211756 · 0591-83210187
Fax: 0591-93211262
E-mail: service@datavideo.cn

China Jinan
DataVideo Technologies China Co
902, No. 1 business building,
Xiangtai Square, No. 129,
Yingxiongshan Road, Shizhong District,
Jinan City, Shandong Province, China
Tel: +86 531-8607 8813
E-mail: service@datavideo.cn

Hong Kong
DataVideo Hong Kong Ltd
G/F, 26 Cross Lane
Wanchai, Hong Kong
Tel: +852-2833-1981
Fax: +852-2833-9916
E-mail: info@datavideo.com.hk

India Noida
DataVideo India Noida
A-132, Sec-63, Noida-201307,
India
Tel: +91-0120-2427337
Fax: +91-0120-2427338
E-mail: sales@datavideo.in

India Kochi
DataVideo India Kochi
2nd Floor-North Wing, Govardhan Building,
Opp. NCC Group Headquarters, Chittoor Road,
Cochin-682035
Tel: +91 4844-025336
Fax: +91 4844-047696
E-mail: sales@datavideo.in

Netherlands
DataVideo Technologies Europe BV
Floridadreef 106
3565 AM Utrecht,
The Netherlands
Tel: +31-30-261-96-66
Fax: +31-30-261-96-67
E-mail: info@datavideo.nl

Singapore
DataVideo Visual Technology(S) Pte Ltd
No. 178 Paya Lebar Road #06-07
Singapore 409030
Tel: +65-6749 6866
Fax: +65-6749 3266
E-mail: info@datavideovirtualset.com

Singapore
DataVideo Technologies (S) PTE Ltd
No. 178 Paya Lebar Road #06-03
Singapore 409030
Tel: +65-6749 6866
Fax: +65-6749 3266
E-mail: sales@datavideo.sg

Taiwan
DataVideo Technologies Co. Ltd
10F, No. 176, Jian 1st Rd., Chung Ho
District, New Taipei City 235, Taiwan
Tel: +886-2-8227-2888
Fax: +886-2-8227-2777
E-mail: service@datavideo.com.tw

United States
DataVideo Corporation
7048 Elmer Avenue,
Whittier, CA 90602,
U.S.A.
Tel: +1-562-696 2324
Fax: +1-562-698 6930
E-mail: sales@datavideo.com

United Kingdom
DataVideo UK Limited
Brookfield House, Brookfield Industrial
Estate, Peakdale Road, Glossop,
Derbyshire, SK13 6LC
Tel: +44-1457 851 000
Fax: +44-1457 850 964
E-mail: sales@datavideo.co.uk

France
DataVideo France s.a.r.l.
Cite Descartes 1, rue Albert Einstein
Champs sur Marne 774477 –
Marne la Vallée cedex 2
Tel: +33-1-60370246
Fax: +33-1-60376732
E-mail: info@datavideo.fr



Please visit our website for latest manual update.
www.datavideo.com/product/TC-200

datavideo
www.datavideo.com

All the trademarks are the properties of their respective owners.
DataVideo Technologies Co., Ltd. All rights reserved 2018