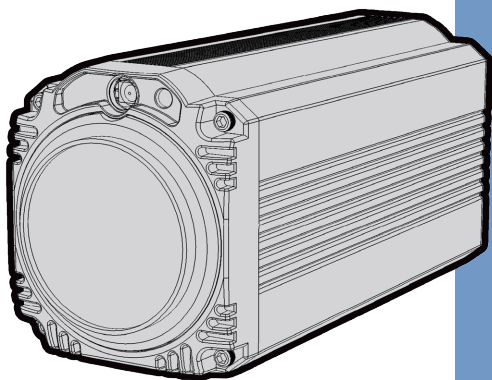


datavideo



4K BLOCK CAMERA

BC-200

Instruction Manual

www.datavideo.com

Table of Contents

FCC COMPLIANCE STATEMENT	4
WARNINGS AND PRECAUTIONS.....	4
WARRANTY.....	5
STANDARD WARRANTY	5
THREE YEAR WARRANTY.....	6
DISPOSAL.....	7
1. INTRODUCTION.....	8
FEATURES	8
2. SYSTEM DIAGRAM.....	9
3. CONNECTIONS.....	10
FRONT VIEW	10
REAR PANEL.....	11
4. IR REMOTE CONTROL	14
5. OSD MENU OPTIONS	19
6. DIP SWITCH SETTINGS	26
7. RMC-180 PTZ CAMERA CONTROL UNIT	27
DIRECT CONNECTION TO CAMERA	27

8.1 DVIP CONFIGURATION TOOL SETTING.....	29
8.1.1 User Interface.....	29
8.1.2 Device Search	31
8.1.3 Clearing Device List	31
8.1.4 Detailed Device Network Information.....	32
8.1.5 Modify Device Information and Write to Device.....	33
8.1.6 Switch to Other Network Interface	34
8.1.7 Language Selection	35
9. FIRMWARE UPGRADE.....	36
10. DIMENSIONS	37
11. SPECIFICATIONS	38
SERVICE AND SUPPORT	40

Disclaimer of Product & Services

The information offered in this instruction manual is intended as a guide only. At all times, Datavideo Technologies will try to give correct, complete and suitable information. However, Datavideo Technologies cannot exclude that some information in this manual, from time to time, may not be correct or may be incomplete. This manual may contain typing errors, omissions or incorrect information. Datavideo Technologies always recommend that you double check the information in this document for accuracy before making any purchase decision or using the product. Datavideo Technologies is not responsible for any omissions or errors, or for any subsequent loss or damage caused by using the information contained within this manual. Further advice on the content of this manual or on the product can be obtained by contacting your local Datavideo Office or dealer.

FCC Compliance Statement

This device complies with part 15 of the FCC rules. Operation is subject to the following two conditions:

- (1) This device may not cause harmful interference, and
- (2) This device must accept any interference received, including interference that may cause undesired operation.

Warnings and Precautions



1. Read all of these warnings and save them for later reference.
2. Follow all warnings and instructions marked on this unit.
3. Unplug this unit from the wall outlet before cleaning. Do not use liquid or aerosol cleaners. Use a damp cloth for cleaning.
4. Do not use this unit in or near water.
5. Do not place this unit on an unstable cart, stand, or table. The unit may fall, causing serious damage.
6. Slots and openings on the cabinet top, back, and bottom are provided for ventilation. To ensure safe and reliable operation of this unit, and to protect it from overheating, do not block or cover these openings. Do not place this unit on a bed, sofa, rug, or similar surface, as the ventilation openings on the bottom of the cabinet will be blocked. This unit should never be placed near or over a heat register or radiator. This unit should not be placed in a built-in installation unless proper ventilation is provided.
7. This product should only be operated from the type of power source indicated on the marking label of the AC adapter. If you are not sure of the type of power available, consult your Datavideo dealer or your local power company.
8. Do not allow anything to rest on the power cord. Do not locate this unit where the power cord will be walked on, rolled over, or otherwise stressed.
9. If an extension cord must be used with this unit, make sure that the total of the ampere ratings on the products plugged into the extension cord do not exceed the extension cord rating.

10. Make sure that the total amperes of all the units that are plugged into a single wall outlet do not exceed 15 amperes.
11. Never push objects of any kind into this unit through the cabinet ventilation slots, as they may touch dangerous voltage points or short out parts that could result in risk of fire or electric shock. Never spill liquid of any kind onto or into this unit.
12. Except as specifically explained elsewhere in this manual, do not attempt to service this product yourself. Opening or removing covers that are marked “Do Not Remove” may expose you to dangerous voltage points or other risks, and will void your warranty. Refer all service issues to qualified service personnel.
13. Unplug this product from the wall outlet and refer to qualified service personnel under the following conditions:
 - a. When the power cord is damaged or frayed;
 - b. When liquid has spilled into the unit;
 - c. When the product has been exposed to rain or water;
 - d. When the product does not operate normally under normal operating conditions. Adjust only those controls that are covered by the operating instructions in this manual; improper adjustment of other controls may result in damage to the unit and may often require extensive work by a qualified technician to restore the unit to normal operation;
 - e. When the product has been dropped or the cabinet has been damaged;
 - f. When the product exhibits a distinct change in performance, indicating a need for service.

Warranty

Standard Warranty

- Datavideo equipment are guaranteed against any manufacturing defects for one year from the date of purchase.
- The original purchase invoice or other documentary evidence should be supplied at the time of any request for repair under warranty.

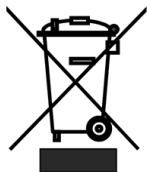
- The product warranty period begins on the purchase date. If the purchase date is unknown, the product warranty period begins on the thirtieth day after shipment from a Datavideo office.
- All non-Datavideo manufactured products (product without Datavideo logo) have only one year warranty from the date of purchase.
- Damage caused by accident, misuse, unauthorized repairs, sand, grit or water is not covered under warranty.
- Viruses and malware infections on the computer systems are not covered under warranty.
- Any errors that are caused by unauthorized third-party software installations, which are not required by our computer systems, are not covered under warranty.
- All mail or transportation costs including insurance are at the expense of the owner.
- All other claims of any nature are not covered.
- All accessories including headphones, cables, and batteries are not covered under warranty.
- Warranty only valid in the country or region of purchase.
- Your statutory rights are not affected.

Three Year Warranty

- All Datavideo products purchased after July 1st, 2017 are qualified for a free two years extension to the standard warranty, providing the product is registered with Datavideo within 30 days of purchase.
- Certain parts with limited lifetime expectancy such as LCD panels, DVD drives, Hard Drive, Solid State Drive, SD Card, USB Thumb Drive, Lighting, Camera module, PCIe Card are covered for 1 year.
- The three-year warranty must be registered on Datavideo's official website or with your local Datavideo office or one of its authorized distributors within 30 days of purchase.



Disposal



For EU Customers only - WEEE Marking

This symbol on the product or on its packaging indicates that this product must not be disposed of with your other household waste. Instead, it is your responsibility to dispose of your waste equipment by handing it over to a designated collection point for the recycling of waste electrical and electronic equipment. The separate collection and recycling of your waste equipment at the time of disposal will help to conserve natural resources and ensure that it is recycled in a manner that protects human health and the environment. For more information about where you can drop off your waste equipment for recycling, please contact your local city office, your household waste disposal service or the shop where you purchased the product.



CE Marking is the symbol as shown on the left of this page. The letters "CE" are the abbreviation of French phrase "Conformité Européene" which literally means "European Conformity". The term initially used was "EC Mark" and it was officially replaced by "CE Marking" in the Directive 93/68/EEC in 1993. "CE Marking" is now used in all EU official documents.

1. Introduction

The BC-200 Block Camera is a 4K (3840x2160, QFHD) camera with an infra-red remote control. It can be used for 4K high quality shooting in an environment where space is limited. The video resolutions supported are 2160p/29.97 and 2160p/25. The BC-200 provides 12x optical focus, and SDI and HDMI video output interfaces. A tally light indicator sits above the BC-200 camera lens.

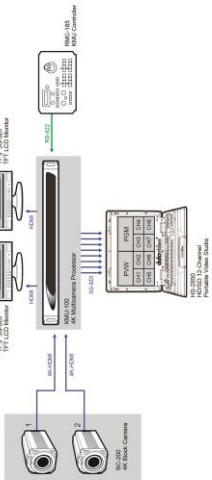
The BC-200 supports SONY VISCA control protocol so that the camera can be controlled via RS-422 or DVIP interface.

Features

- Lens: 1/2.3" type Exmor R CMOS
- 12x optical zoom, f = 3.9 mm (Wide) to 46.8 mm (Tele), F1.8 to F2.0
- Supported 4K formats: (3,840 x 2,160, QFHD)
2160p/29.97, 2160p/25
- Supported HD formats:
1080p/59.94/50, 1080i/59.94/50,
720p/59.94/50
- Video Output: 2 HDMI (Simultaneous)
- Tally LED Design (RS-422/ DVIP Operation)
- Supports SONY VISCA Protocol
- Supports DVIP and RS-422 Control Protocol
- Users can save up to 10 preset camera settings for future filming.
- Users can control up to 4 BC-200 devices simultaneously via the RMC-180 PTZ camera remote control unit (including White Balance, Focus, Iris, Shutter Speed, Zoom, Zoom Speed, Save Preset, Recall Preset)

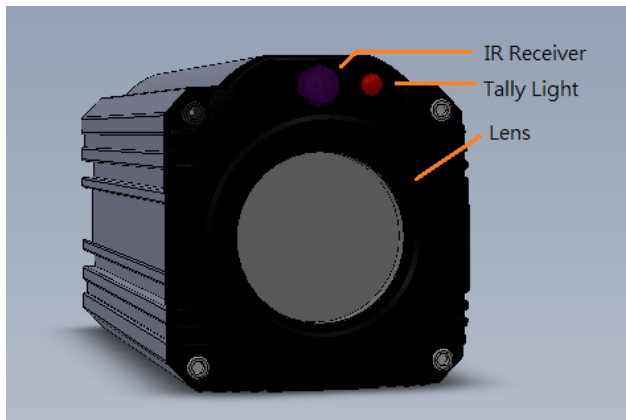
P.S. Shutter speed function must be set by the RMC-180 menu.

2. System Diagram



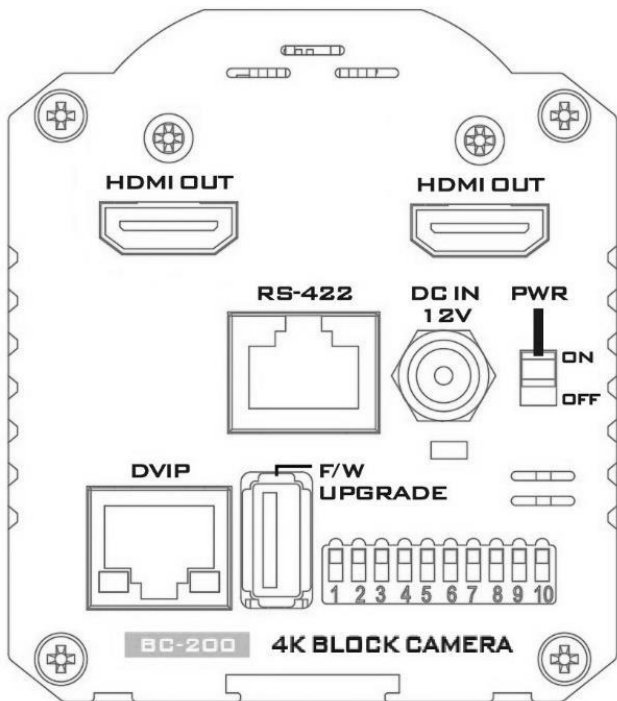
3. Connections

Front View



IR Receiver	Receives signal from the IR remote control.
Tally Light	As the camera is booting the tally light stays solid green and turns solid red for about three seconds just before the boot is complete. The tally light remains solid green after the camera finishes booting.
Lens	Camera lens for capturing images.

Rear Panel





SDI Output

Video output connected to SDI monitor.



HDMI Output

Video output connected to HDMI port of the monitor.



RS-422 Control Port

Remote control port using the RS-422 control protocol. See [RS-422 Control Protocol](#) for details.



12V DC Power IN

DC in socket connects the supplied 12V PSU. The connection can be secured by screwing the outer fastening ring of the DC In plug to the socket.



Power Switch

Turns ON/OFF the camera.



Power LED Indicator

Green: Power ON
OFF: Power OFF



DVIP Control Port

Remote control port using the DVIP control protocol. See [DVIP Control Operation Guide](#) for details.



Firmware Upgrade Port

Connects USB drive for firmware upgrade. For details, please refer to the [Firmware Upgrade](#) section.

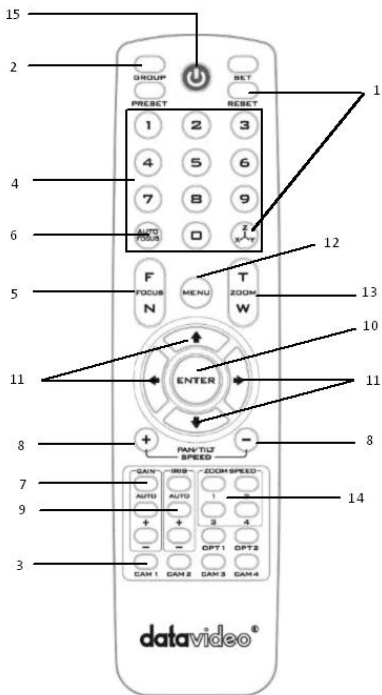





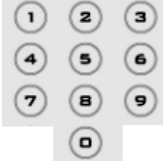
DIP Switch




DIP Switch sets the camera VISCA ID, Remote Control Protocol, and Resolution, Video Mode Selection Method, and Camera ID Assignment. For details, please refer to the [DIP Switch Settings](#) section.




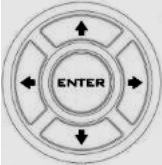
4. IR Remote Control





Use the IR remote control that comes with the product package to operate the BC-200 Block Camera. The IR remote control functions are described in the table below.



No	Item	Description
1	<p>Reset</p> 	<p>Press RESET or XYZ button to return the camera lens to the default zoom position (Z:0000).</p>
2	<p>Group</p> 	<p>Not Applicable</p>
3	<p>Camera Select</p> 	<p>Select CAM1-CAM4 in a multi-camera environment Press Camera Select buttons to select a camera from Camera 1 to Camera 4 in a multi-camera environment.</p> <p>However before using the Camera Select function, first assign an ID number (CAM 1 – CAM 4) to the camera intended for remote control operation by adjusting the DIP switch located at the rear of the camera. Please refer to DIP Switch Settings section for details.</p>
4	<p>Preset Setting</p> 	<p>Various combinations of settings (position, zoom, focus, gain control and iris control) can be saved to presets.</p> <p>Adjust Preset Point Adjust position, zoom, focus, gain control and iris of the camera.</p>

		<p>Set up Preset Point Press any of the POSITION buttons 1~50 and then press SET button.</p> <p>Recall saved settings Press any of the POSITION buttons 1~50 and then press PRESET button.</p> <p>Set up Group Scan mode Press any of the POSITION buttons 1~8 and then press GROUP button.</p>
5	<p>Focus Setup</p> 	<p>Manually focus camera lens on a subject Press either (F) FAR button or (N) NEAR button to manually focus the camera lens onto the subject.</p> <p>Before using manual focus, make sure Auto Focus mode is turned off by pressing the AUTO FOCUS button.</p>
6	<p>Auto Focus Control</p> 	<p>Automatically focus camera lens on a subject Press AUTO FOCUS button and camera lens will be automatically focused on the subject.</p>
7	<p>Gain Control</p> 	<p>Adjust Brightness Press GAIN+ button to increase the brightness or GAIN- button to decrease the brightness.</p> <p>Press AUTO button to activate auto Gain Control and press again to exit.</p>

8	<p style="text-align: center;">P/T Speed</p>  <p>The diagram shows two circular buttons, one with a plus sign (+) on the left and one with a minus sign (-) on the right. Below them is a horizontal line with the text "PAN/TILT SPEED" centered underneath.</p>	<p>Adjust Pan/ Tilt Speed Not Applicable</p>
9	<p style="text-align: center;">Auto Iris Control</p>  <p>The diagram shows a vertical rectangular panel with four buttons. From top to bottom: a button labeled "IRIS", a button labeled "AUTO", a button with a plus sign (+), and a button with a minus sign (-).</p>	<p>Make the subject appear brighter Adjust the iris opening (aperture), to control the amount of light coming through the lens (i.e. the "exposure"). Press IRIS+ button to enlarge the iris opening to allow more light to come in so that the subject appears brighter and press IRIS- button to shrink the iris opening to allow less light to come in so that the subject appears less bright.</p> <p>Press AUTO button activate auto Iris Control and press again to exit.</p>
10	<p style="text-align: center;">ENTER</p>  <p>The diagram shows a circular button with the word "ENTER" written in the center.</p>	<p>ENTER Press ENTER key to select a particular menu option or confirm a parameter value.</p>
11	<p style="text-align: center;">Direction Arrows</p>  <p>The diagram shows a circular button with a central "ENTER" label. Surrounding the center are four arrowheads pointing up, down, left, and right.</p>	<p>Browse Menu Options Press UP, DOWN, LEFT and RIGHT arrow buttons to browse the menu options or adjust parameter values.</p>

12	<p>Enter/ Exit Camera Menu</p> 	<p>Press the MENU button to Enter or Exit the Camera OSD Menu</p>
13	<p>Zoom In/Out Buttons</p> 	<p>Zoom Press either (T) TELE button to zoom in on the subject such that it appears to be close to the camera or (W) WIDE button to zoom out from the subject such that it appears to be far away from the camera.</p>
14	<p>Zoom Speed Buttons (4 speed selection)</p> 	<p>Adjust Zoom In/Out Speed Press the ZOOM SPEED buttons to switch to different zoom speeds (4 being the highest and 1 being the lowest).</p>
15	<p>Power Button</p> 	<p>Switch ON/OFF camera</p>

5. OSD Menu Options

On-Screen Menu allows the user to change various camera settings such as shooting conditions and the system setup. Press **Menu** button on the **IR remote control** to enter the on-screen menu as shown below.

[MAIN MENU] 1: Camera Setting 2: Video Output 3: Remote Control 4: System 5: Escape
--

Main Menu	
1. Camera Setting	White Balance Color temperature adjustment to make the image look more natural.
	IRIS This is an adjustable aperture used to control the amount of light coming through the lens. The more the iris is opened, the more light it lets in and the brighter the scene will be.
	AGC The setting that automatically adjusts the amplification of the signal from the camera sensor.
	Aperture Aperture adjusts the image sharpness. Increasing the aperture setting so that the foreground and background of your images appear sharp.
2. Video Output	Selection Way This option configures how you can select the video mode. Enabling DIP SW 8 allows you to use the DIP

	switch to set the video mode instead of the remote control.
	Pattern Pattern generates color bars for color calibration.
3. Remote Control	Remote control settings
4. System	System configuration
5. Escape	Exits the MENU

Main Options	Camera Setting	Video Output	Remote Control	System	Escape
Sub-Options	1. Camera Name	1. Selection Way	1. Remote Way	1. Display	
	2. Mirror	2. Out Mode	2. Set RS-422	2. Tally Light	
	3. White Balance	3. Pattern	3. Set DVIP	3. Reset All	
	4. Focus	4. Escape	4. Set IR	4. Update Software	
	5. Iris		5. Escape	5. Escape	
	6. AGC				
	7. Fog Correction				
	8. Aperture				
	9. Color Gain				
	10. Exposure Compensation				
	11. Backlight Correction				
	12. Day/Night Mode				
	13. Shutter				
	14. Gamma Mode				
	15. HR Mode				
	16. WD Mode				
	17. Escape				

First Level Main Options	Second Level Sub-Options	Third Level Parameters	Fourth Level Parameters	Sub-Option Descriptions	
1. Camera Setting	1. Camera Name	NAME			
		DISPLAY SW	ON/OFF		
		POSITION	UPPER LEFT		
			LOWER LEFT		
			UPPER RIGHT		
			LOWER RIGHT		
	ESCAPE				
	2. Mirror	H+V			
		V			
		H			
		OFF			
	3. White Balance	MODE	ATW/AWB (AUTO)		
			AWC (ONE PUSH)		
			MWB (MANUAL)		
			3200K (INDOOR)		
			5600K (OUTDOOR)		
			4200K (FLUO)		
		SMART AWB (Enabled in ATW/AWB (AUTO) mode)	OFF		
			SMART1~3		
		MWB RED COMPONENT (Enabled in MWB (Manual))	0~128~255		
	MWB BLUE COMPONENT (Enabled in MWB (Manual))	0~128~255			
	ESCAPE				
	4. Focus	FOCUS MODE	AUTO		
			MANUAL		
		AF SENSITIVITY	LOW		
			NORMAL		
		FOCUS SPEED	1		
2					
3					
4					

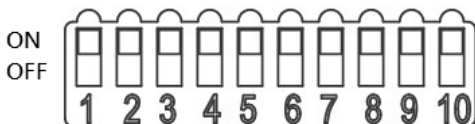
		5	
		6	
		7	
		8	
ESCAPE			
5. Iris	IRIS MODE	AUTO	
		MANUAL	
	Manual IRIS LEVEL	F1.8	
		F2.0	
		F2.4	
		F2.8	
		F3.4	
		F4	
		F4.8	
		F5.6	
		F6.8	
		F8	
		F9.6	
		F11	
F14			
CLOSE			
ESCAPE			
6. AGC	DAY (COLOR) AGC	AGC MODE	ON/OFF
		MANUAL GAIN	0dB~GAIN LIMIT in steps of 3 dB
			9 dB
		GAIN LIMIT	12 dB
			15 dB
			18 dB
			21 dB
			24 dB
	27 dB		
	30 dB		
	33 dB		
ESCAPE			
DNR	DNR(AT AGC ON)	ON	
		OFF	
	DNR LEVEL	0	
		1	
		2	

			3
			4
			5
		ESCAPE	
	ESCAPE		
7. Fog Correction	FOG CORRECTION	ON/OFF	
	ESCAPE		
8. Aperture	0~15		
9. Color Gain	0~14		
10. Exposure Compensation	0~14		
11. Backlight Correction	OFF/ON (This option is enabled after AGC is turned on)		
12. Day/Night Mode	B/W		
	COLOR		
13. Shutter	SHUTTER SPEED	1/25	
		1/30	
		1/50	
		1/60	
		1/75	
		1/90	
		1/100	
		1/120	
		1/125	
		1/150	
		1/180	
		1/215	
		1/250	
		1/300	
		1/350	
		1/425	
		1/500	
1/600			
1/725			
1/1000			
1/1250			
1/1500			
	ESCAPE		

	14. Gamma Mode	STANDARD MODE1 (WD OFF) MODE2 (WD OFF)			
	15. HR Mode	ON/OFF (This option is enabled after AGC is turned on)			
	16. WD Mode	VE			
		OFF			
17. Escape					
2. Video Output	1. Selection Way	BY MENU (Set DIP8 to Off)			
		BY SWITCH(Set DIP8 to On)			
	2. Out Mode	1080i59.94			
		1080i50			
		720p59.94			
		720p50			
		1080p59.94			
		1080p50			
		2160p29.97			
2160p25					
3. Pattern	OFF				
	COLOR BAR				
4. Escape					
3. Remote Control	1. Remote Way	RS-422, SW	(Configurable using DIP switch 4 ONLY)		
		DVIP, SW			
	2. Set RS-422	CAMERA ID MODE	BY MENU		
		CAMERA ID	BY SWITCH		
		RS-422 BAUD RATE	1~7		
			9600		
			19200		
			38400		
	115200				
	ESCAPE				
	3. Set DVIP	DVIP BAUD RATE	9600		
19200					
38400					
57600					
115200					

	ESCAPE				
	4. Set IR	IR GROUP ID	CAM1-4	(Configurable using DIP switch 9/10 ONLY)	
5. Escape					
4. System	1. Display	ZOOM OSD	ON/OFF		
		DEBUG OSD	DEBUG IR OSD	ON/OFF	
			DEBUG CAM. OSD	ON/OFF	
			DEBUG RS-422 OSD	ON/OFF	
			DEBUG DVIP OSD	ON/OFF	
			DEBUG REG OSD	ON/OFF	
			DEBUG FRAME NO	ON/OFF	
			PWR ON CAM TEST	ON/OFF	
	ESCAPE				
	2. Tally Light	RED/GREEN			
		GREEN			
		RED			
		OFF			
	3. Reset All	YES/NO			
	4. Update Software	SW VERSION	ESCAPE		
		MB CPU	V00.19c		
		UPDATE ALL	YES/NO		
	ESCAPE				
	5. Escape				
	5. Escape				

6. DIP Switch Settings



DIP SW 1/2/3	VISCA ID
ON / OFF / OFF	VISCA-ID 1
OFF / ON / OFF	VISCA-ID 2
ON / ON / OFF	VISCA-ID 3
OFF / OFF / ON	VISCA-ID 4
ON / OFF / ON	VISCA-ID 5
OFF / ON / ON	VISCA-ID 6
ON / ON / ON	VISCA-ID 7
DIP SW 4	Remote Control Protocol
ON	DVIP
OFF	RS-422
DIP SW 5/6/7	Resolution
OFF / OFF / OFF	1920 x 1080i59.94
OFF / ON / OFF	1280 x 720p59.94
OFF / OFF / ON	1920 x 1080p59.94
OFF / ON / ON	3840 x 2160p29.97
ON / OFF / OFF	1920 x 1080i50
ON / ON / OFF	1280 x 720p50
ON / OFF / ON	1920 x 1080p50
ON / ON / ON	3840 x 2160p25
DIP SW 8	Video Mode Selection Method
ON	ON = video mode selectable by DIP switch only
OFF	OFF = video mode selectable by menu
DIP SW 9/10	Camera Select Function (IR Remote Control) – Camera ID Assignment
OFF / OFF	CAM 1
ON / OFF	CAM 2
OFF / ON	CAM 3
ON / ON	CAM 4

7. RMC-180 PTZ Camera Control Unit

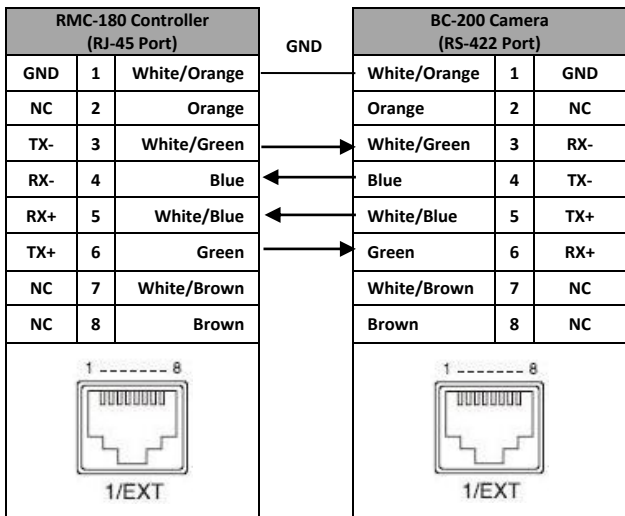
The RMC-180 PTZ Camera Controller is designed to control up to 4 Datavideo Block/Pan Tilt Zoom (PTZ) cameras such as the BC-200.

The four RJ-45 ports provided on the RMC-180 rear serve to connect Block/PTZ cameras, thus allowing the user to use any RJ-45 cable to connect the RMC-180 to the RS-422 port located on the Block/PTZ camera's rear panel. The communication protocol is VISCA.

Note: Before connecting the camera to these channel ports, please set bit 4 of the camera DIP switch located at the bottom to OFF.

Direct Connection to Camera

To use the RMC-180 PTZ Camera Control Unit to directly control the BC-200 camera, connect the RS-422 port on the camera's rear panel to the RJ-45 port of the RMC-180 using any RJ-45 cable. The RS-422 wiring scheme is shown below.



8. DVIP Configuration Tool

The DVIP Configuration Tool allows users to setup the network setting of the BC-200 HD block camera. Please see following sections for the detail of the DVIP Configuration Tool setting.

8.1 DVIP Configuration Tool Setting

At first, you have to download the DVIP Configuration Tool from Datavideo website's product page to your PC. Moreover, you can also get the DVIP Configuration Tool from your local distributor. After the software download is completed, please follow following steps for setting the DVIP Configuration Tool.

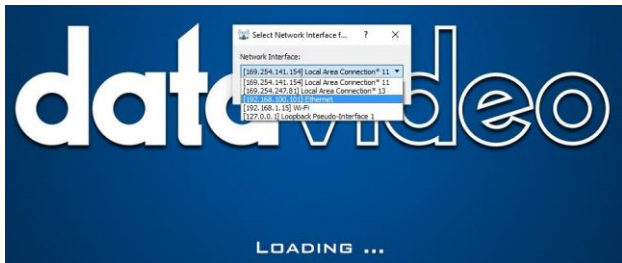
Step1. Connect your PC directly to the DVIP port of the BC-200 camera. If there is more than one BC-200 camera, please connect all the BC-200 cameras to an Ethernet router. Please make sure that the Ethernet router and all connected devices are within the same IP range.

Step2. On the PC, please open the DVIP Configuration Tool by double-clicking the **"DVIP_Net_Conf.exe."**

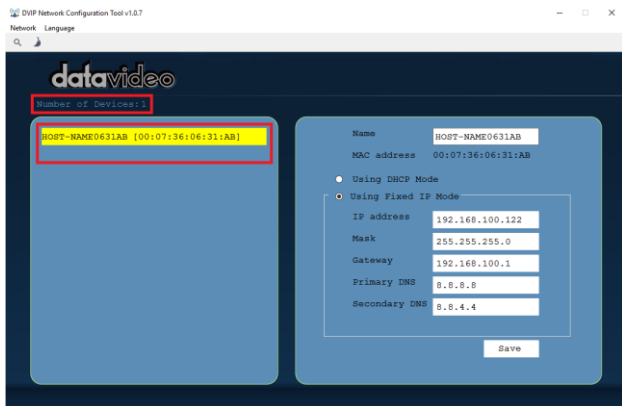
8.1.1 User Interface

Step1. After the DVIP Configuration Tool is opened, please select the corrected network interface card in your PC and then click the button **"OK"**.

Note: Please make sure that the selected network interface card is within the same IP range as the connected BC-200 camera or it is impossible for the DVIP Configuration Tool to find the connected DVIP device.

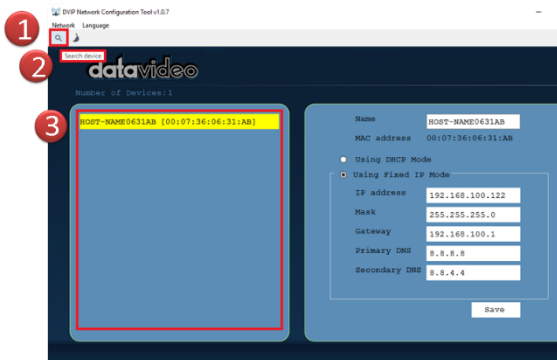


Step2. After logging in the interface card, the user will be able to view the device name, MAC address and number of device.



8.1.2 Device Search

- On the tool bar, users can click the search icon to search for all DVIP devices.



8.1.3 Clearing Device List

- On the tool bar, users are allowed to clear the device list by clicking the “Device List Clear” button.



8.1.4 Detailed Device Network Information

- After selecting a device in the left column, you will then be able to view each device information on the right, including name, MAC, IP address and etc.



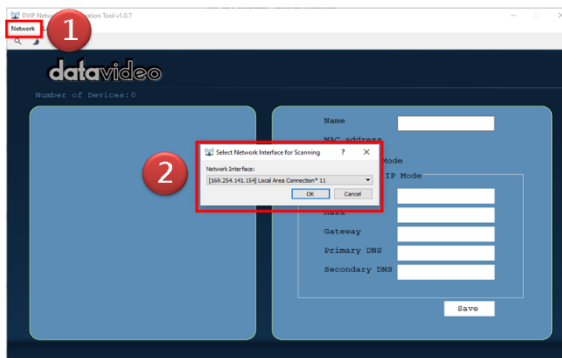
8.1.5 Modify Device Information and Write to Device

- The user is allowed to modify the device information in the right column such as device name, MAC, IP address and etc. Click the Save button to write the information into the device. Right after the Save button is clicked, you will be able to see a prompt message at the top right corner to request for a device reboot for the new settings to become effective.



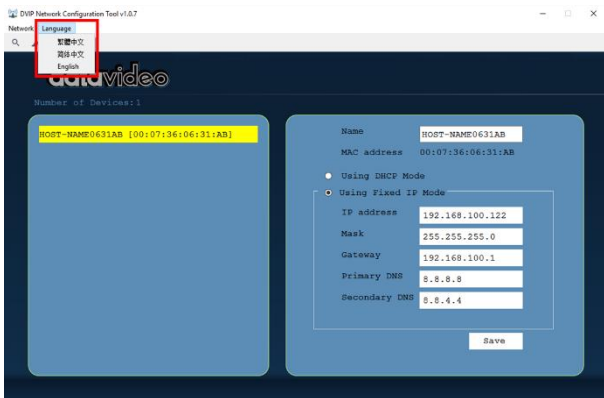
8.1.6 Switch to Other Network Interface

- To select other network interface cards, click Network → Network Card



8.1.7 Language Selection

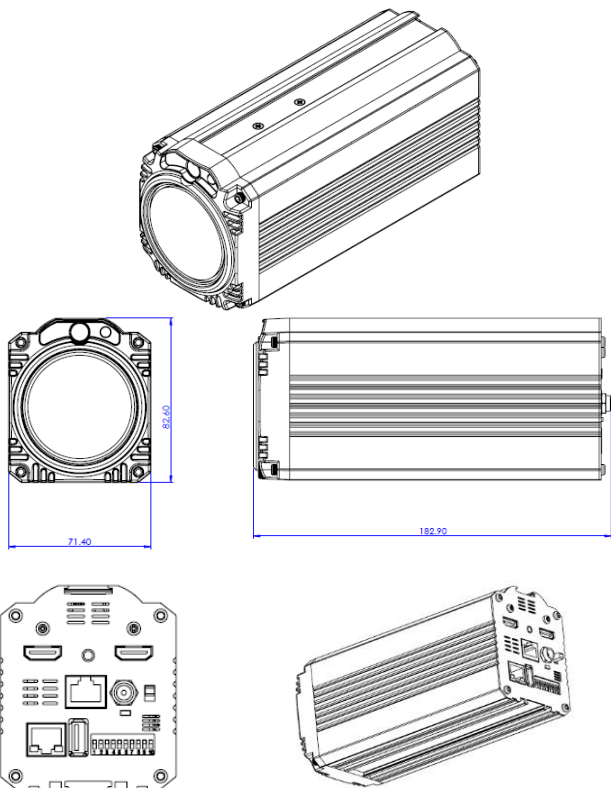
- On the tool bar, select a language: Traditional Chinese, Simplified Chinese or English



9. Firmware Upgrade

- 1) Copy MB CPU image files into the root directory of a USB hard drive (<16 GB) and insert it into the USB Upgrade port (You may use a USB extension cord).
- 2) Open the OSD menu using IR remote control by pressing the MENU button.
- 3) Browse to
=> 4: SYSYEM
 => 4: UPDATE SOFTWARE
 => 3: UPDATE ALL
 =>YES
 => ENTER
- 4) Wait for another five minutes until the following lines appear on the screen
- Updated MCPUC =>OK
The OSD will flash "Write OK/Power ON Again".
Note: it takes approximately 5-7 minutes to complete the update.
- 5) Turn off the device by unplugging the power cord. Plug the power cord back into the socket and then turn on the device again.
- 6) FW Update is complete.

10. Dimensions



All measurements in millimeters (mm)

11. Specifications

Video	
Image Pickup Element	1/2.3" type Exmor CMOS sensor
Effective Picture Elements	Approx. 8.93 Mega pixels
Signal System	4K (3,840 x 2,160, QFHD) 2160p / 29.97, 2160p/25 HD: 1080p59.94/50 1080i59.94/50 720p59.94/50
Min. Illumination	50%, High Sensitivity Mode Color : 0.75 lx (F1.8, AGC ON, 1/30 sec) 50%, Normal Mode: Color: 3 lx (F1.8, AGC ON, 1/30 sec)
Recommended Illumination	100 lx – 100,000 lx
Gain	Auto / Manual (0 to 33 dB) Max. Gain Limit (9 to 33 dB)
Shutter Speed	1/25 (1/30), 1/50 (1/60), 1/75(1/90), 1/100, 1/120 (1/125), 1/150(1/180), 1/215(1/250), 1/300(1/350), 1/425(1/500), 1/600(1/725), 1/1000, 1/1250(1/1500)sec
Backlight Compensation	Yes
Exposure Control	Auto, Manual, Priority Mode (shutter priority & iris priority) Bright, EV compensation
White Balance	Auto, Indoor, Outdoor, Sodium Vapor Lamp, One-push, Manual
Focusing System	Auto (Sensitivity: normal, low), One-Push AF, Manual, Zoom Trigger AF

Lens	
Lens Type	12x Optical Zoom, f = 3.9 mm (WIDE) to 46.8 mm (TELE) F1.8 to F2.0
Digital Zoom	12x
Angle of View (Horizontal)	70.7 degrees (WIDE END) to 6.4 degrees (TELE END)
Minimum Object Distance	10 mm (WIDE END) to 1,500 mm (TELE END) (Default: 300 mm)
Video Output	
Video Output	HDMI x 2
Control	
Protocol	VISCA / DVIP Protocol
Remote Control	RS-422 & DVIP by RJ-45 interface
F/W Update	USB 2.0
IR Control	One IR controller
Others	
Operating Temperature	0°C ~ 40°C (32°F~104°F)
Storage Temperature	- 10°C ~ 60°C (14°F~140°F)
Operating Humidity:	10 % to 80 % (non-condensing)
Power	DC 12V 1A
Power Consumption	10W
Dimensions (W x H x D)	71.4 x 82.6 x 182.9(mm) (without Tripod mount adapter) 71.4 x 95.2 x 182.9(mm) (with Tripod mount adapter)
Net Weight	0.936Kg(w/tripod mount adapter)

Service & Support

It is our goal to make your products ownership a satisfying experience. Our supporting staff is available to assist you in setting up and operating your system. Please refer to our web site www.datavideo.com for answers to common questions, support requests or contact your local office below.

China Shanghai

DataVideo Technologies China Co
601 Building 10, No. 1228,
Rd. Jiangchang,
Jingan District, Shanghai
Tel: +86 21-5603 6599
Fax: +86 21-5603 6770
E-mail: service@datavideo.cn

China Beijing

DataVideo Technologies China Co
No. 812, Building B, Wankai Center,
No. 316, Wan Feng Road, Fengtai District,
Beijing, China
Tel: +86 10-8586 9034
Fax: +86 10-8586 9074
E-mail: service@datavideo.cn

China Chengdu

DataVideo Technologies China Co
B-323, Meridian Square, No. 1386,
Middle of Tianfu Avenue, Gaokun District,
Chengdu, Sichuan
Tel: +86 28-8613 7786
Fax: +86 28-8513 6486
E-mail: service@datavideo.cn

China Fuzhou

DataVideo Technologies China Co
A1-2318-19 Room, No. 8, Aojiang Road,
Taijiang District, Fuzhou, Fujian, China
Tel: 0591-83211756 • 0591-83210187
Fax: 0591-83211262
E-mail: service@datavideo.cn

China Jinan

DataVideo Technologies China Co
902, No. 1 business building,
Xiangtai Square, No. 129,
Yingshiangshan Road, Shizhong District,
Jinan City, Shandong Province, China
Tel: +86 531-8607 8813
E-mail: service@datavideo.cn

Hong Kong

DataVideo Hong Kong Ltd
Q/F, 26 Cross Lane
Wanchai, Hong Kong
Tel: +852-2833-1981
Fax: +852-2833-9916
E-mail: info@datavideo.com.hk

India Noida

DataVideo India Noida
A-132, Sec-63, Noida-201307,
India
Tel: +91-0120-2427337
Fax: +91-0120-2427338
E-mail: sales@datavideo.in

India Kochi

DataVideo India Kochi
2nd Floor- North Wing, Govardhan Building,
Opp. NCC Group Headquarters, Chittoor Road,
Cochin- 682035
Tel: +91 4844-025336
Fax: +91 4844-047696
E-mail: sales@datavideo.in

Netherlands

DataVideo Technologies Europe BV
Flionsdreef 106
3565 AM Utrecht,
The Netherlands
Tel: +31-30-26198-66
Fax: +31-30-261-96-57
E-mail: info@datavideo.nl

Singapore

DataVideo Visual Technology(S) Pte Ltd
No. 178 Paya Lebar Road #06-07
Singapore 409030
Tel: +65-6749 6866
Fax: +65-6749 3266
E-mail: info@datavideovirtualset.com

Singapore

DataVideo Technologies (S) PTE Ltd
No. 178 Paya Lebar Road #06-03
Singapore 409030
Tel: +65-6749 6866
Fax: +65-6749 3266
E-mail: sales@datavideo.sg

Taiwan

DataVideo Technologies Co. Ltd
10F, No. 176, Jian 1st Rd., Chung Ho
District, New Taipei City 235, Taiwan
Tel: +886-2-3227-2888
Fax: +886-2-3227-2777
E-mail: service@datavideo.com.tw

United States

DataVideo Corporation
7349 Elmer Avenue,
Whittier, CA 90662,
U.S.A.
Tel: +1-562-696 2324
Fax: +1-562-696 6930
E-mail: sales@datavideo.com

United Kingdom

DataVideo UK Limited
Brookfield House, Brookfield Industrial
Estate, Peakdale Road, Glossop,
Derbyshire, S13 6LQ
Tel: +44 1457 851 000
Fax: +44 1457 850 964
E-mail: sales@datavideo.co.uk

France

DataVideo France s.a.r.l.
Cité Descaries 1, rue Albert Einstein
Champs sur Marne 774477 -
Marné la Vallée cedex 2
Tel: +33-1-60370246
Fax: +33-1-60376732
E-mail: info@datavideo.fr



Please visit our website for latest manual update.

www.datavideo.com/product/BC-200

datavideo
www.datavideo.com

All the trademarks are the properties of their respective owners.
DataVideo Technologies Co., Ltd. All rights reserved 2018